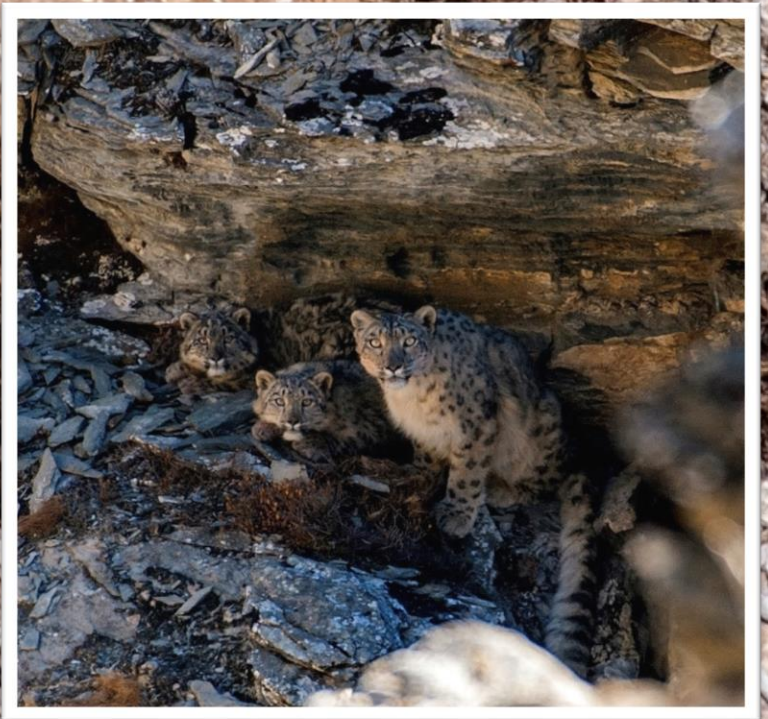


PHOTOS FROM THE WILD

Photographs by TASHI R. GHALE



Snow leopard *Panthera uncia* is a highly elusive cat species found in the Himalayas. The chance of sighting this majestic creature in its natural habitat is very rare. These photos were taken in Manang during January 2018. The lower-right photo shows a mother snow leopard with her two cubs.

Himalayan blue sheep *Pseudois nayaur* is an ungulate species found in the Himalayas. They graze and live in the grassy slopes and are considered as the main prey of snow leopard in Nepal.

The background photo of the herd was taken in Manang district during October 2017. The lower-left photo was taken during February 2018.



TASHI R. GHALE

Biosketch

TASHI R. GHALE is a photographer, entrepreneur, and conservationist from Manang district of Nepal. Since 2016, he has been monitoring snow leopards as a citizen scientist for Global Primate Network (GPN) Nepal and Snow Leopard Conservancy (SLC). He received the Abraham Conservation Award 2016 in recognition of his outstanding contribution to conservation of nature in Nepal from WWF-Nepal. He was successful in obtaining the first camera trap image of Pallas's cat in Nepal.

